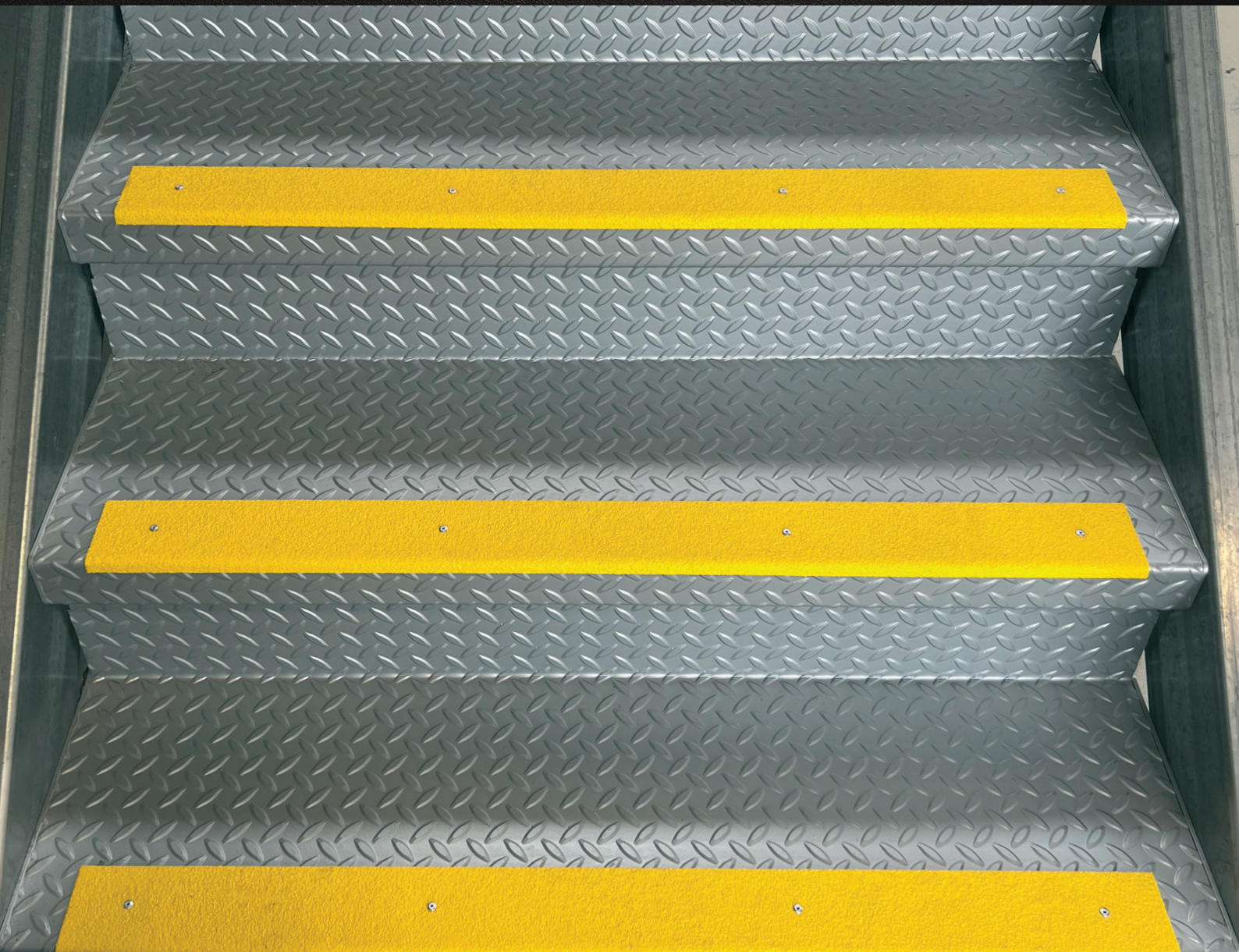




**ADVANCE**  
ANTI-SLIP SURFACES P/L

## ***Advance Anti-Slip Stair Nosing Installation Guide***

**Stair Nosing on Checker-Plate Steps using Rivets**



**[www.advanceantislip.com](http://www.advanceantislip.com)**



# INTRODUCTION

**Advance Anti-Slip Surfaces slip resistant products are designed for easy installation and can be installed onto a variety of different surfaces with minimal effort.**

Fitting Advance Anti-Slip metal backed products securely can be achieved by mechanical fastening or fixing such as rivets combined with a quality sealant adhesive.

However, we do not recommend the use of adhesive alone for installation of stair nosings as the bond cannot be guaranteed without mechanical fixing.

### PPE.

When installing Advance Anti-Slip stair nosings we suggest that appropriate Personal Protective Equipment (PPE) is worn at all times. An example of PPE is safety glasses, appropriate dexterous gloves, P2 dust mask, hearing protection and safety boots.




### SAFETY.

Please ensure that extreme caution is considered whilst ascending and descending stairs, wearing safety clothing, required PPE and appropriate work procedures are followed.

### TOOLS.



- Hammer or rubber mallet



- Straight edge or string line



- Caulking gun



- Permanent marker



- Variable speed drill – Electric/ Battery



- Pop Rivet gun



- Ruler or tape measure



- No 20 or 4.09mm high speed metal drill bit



- Dust Pan

### MATERIALS.

- Advance Anti-Slip Surfaces Antislip Stair Nosing, with pre-drilled holes
- Sealant Adhesive – tube/ cartridge
- 5/32 Rivets

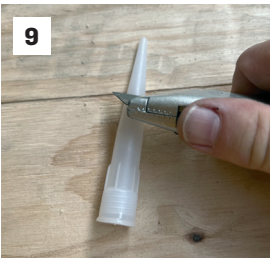
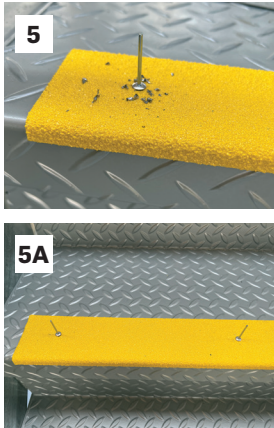
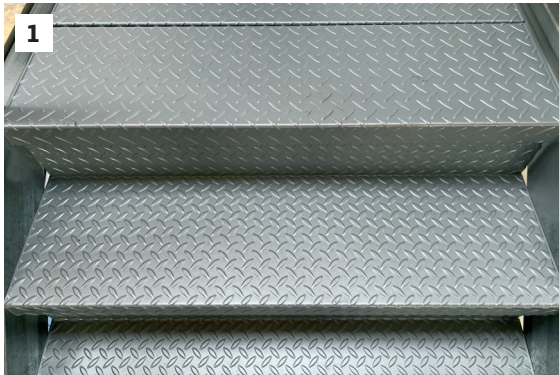


# INSTALLATION METHOD

### CHECKER-PLATE / DIAMOND TREAD.

**Fixing method – Rivet with Sealant Adhesive**

1. Ensure each step is free of debris and clean of any liquid spills etc.
2. Place the pre-drilled antislip stair nosing into the required position.
3. Mark the position on the checker-plate where the hole is to be drilled.
4. Using the variable speed drill and 6mm drill bit, drill a hole into the checker-plate where the rivet is to be placed.
5. Once the hole is drilled, remove any swarf or debris from the checker-plate and nosing surfaces.
6. Insert the rivet through the pre-drilled hole in the stair nosing and into the hole in the checker-plate which will hold the stair nosing in position for the next hole.
7. Repeat this process until all holes are drilled for the first nosing.
8. Prepare the tube of sealant adhesive by cutting the tube tip open.
9. Prepare the tube nozzle by cutting the tip to a diagonal shape, insert the tube into the caulking gun.



\*May be needed if mechanical fixing is required in addition to adhesive based installation.

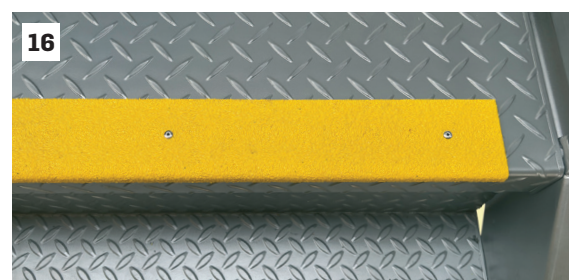
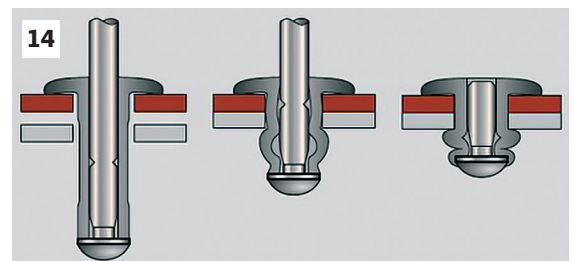
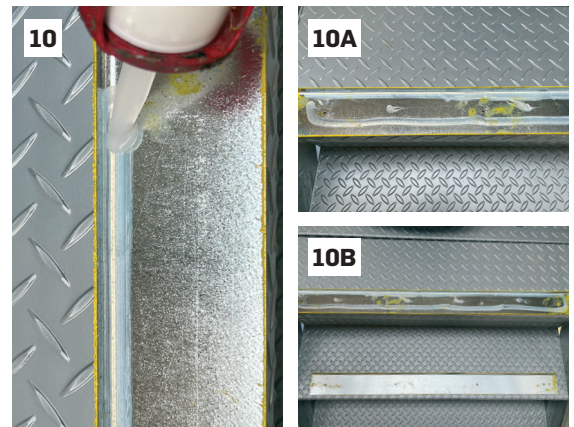


# INSTALLATION METHOD

10. Apply a 5mm bead of sealant adhesive to the underside of the stair nosing, not too close to the side that it will squeeze out past the nosing edge when applying the nosing to the checker-plate surface.
11. Align the nosing in place with rivets in each hole to hold the nosing in position.
12. Repeat this process for each stair nosing.
13. Load the pop rivet into the rivet gun, mandrel first, so the sleeve is pointing outward.
14. Insert the body of the rivet all the way into the drilled hole. The flange of the rivet should be flush to the joint.
15. Squeeze the trigger rivet gun until you feel or hear a snap sound that indicates the mandrel has been removed.
16. Once the mandrel is snapped off, the collar becomes the rivet head.
17. The rivet will squeeze the nosing to the checker plate tightly.
18. Remove the mandrel from the rivet gun.
19. Continue this process until all nosings have been installed.
20. Ensure all swarf is removed to avoid any potential of swarf rust occurring, wipe away any sealant adhesive that might be exposed out of the sides of the nosing.

## Disclaimer:

Installation instructions are designed as a guide only. Individual site circumstances should be considered prior to the commencement of installation.



**ADVANCE ANTI-SLIP SURFACES Pty. Ltd.**

6A Aristoc Road, Glen Waverley 3150, Victoria, Australia

P: +61 3 9560 4488 F: +61 3 9562 0449 E: sales@advanceantislip.com

[www.advanceantislip.com](http://www.advanceantislip.com)

*Let every step you  
take be a safe one  
with Advance  
Anti-Slip Surfaces!*