

# STAIR NOSINGS – 1428 RANGE



**Advance Anti-Slip Surfaces Pty Ltd is leading the way with a range of stair nosings specifically designed to comply with the requirements of Australian Standard® AS1428.1 – 2009. Design for Access and Mobility.**

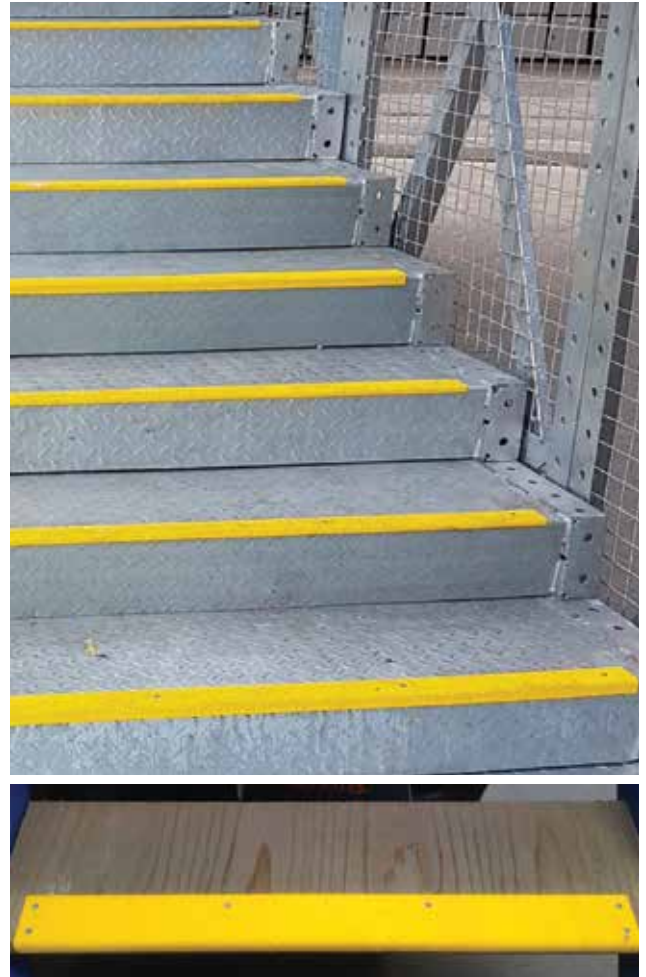
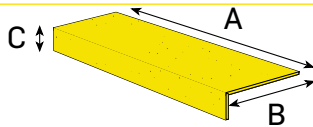
DIMENSIONS (mm)					PRODUCT CODE
A*	x	B*	x	C*	
600	x	50	x	10	SN6005010
750	x	50	x	10	SN7505010
900	x	50	x	10	SN9005010
1200	x	50	x	10	SN12005010
600	x	75	x	10	SN6007510
750	x	75	x	10	SN7507510
900	x	75	x	10	SN9007510
1200	x	75	x	10	SN12007510

## CUSTOM MADE SIZES AVAILABLE ON REQUEST

### Universal Clamp

### AASUNICLAMP

\* Stair nosing range complies with the width and depth requirements set out in Australian Standard AS1428.1 - 2009.



## SPECIFICATIONS

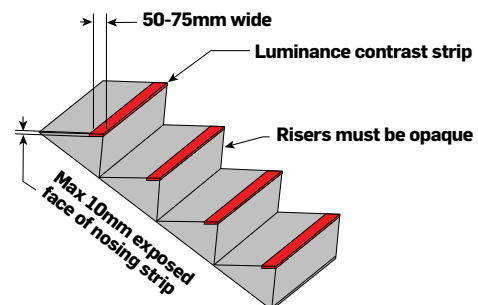
<b>QUALITY:</b>	Class One
<b>PROFILE:</b>	Single Bend
<b>GRADE:</b>	Heavy Duty – R13 (more grades available)
<b>FOUNDATION:</b>	Galvabond (more foundations available)
<b>COLOUR:</b>	Safety Yellow (more colours available)
<b>AGGREGATE:</b>	Silicone Carbide
<b>PRE-DRILLED HOLES:</b>	Available as required

**Advance Anti-Slip products are designed to suit commercial and industrial applications. Testing completed is to AS 4586 - 2013 and is compliant to the Building Code of Australia (BCA) / National Construction Code (NCC).**

Contrasting nosing strips are required to be not less than 50mm and not more than 75mm on the tread/ going and when located at the front edge of a stair cannot extend down the riser more than 10mm.

Stair nosing shall have a minimum luminance contrast of 30% to the background stairway.

A stairway is deemed to be two (or more) continuous steps.



## ADVANCE ANTI-SLIP SURFACES Pty. Ltd.

6A Aristoc Road, Glen Waverley 3150, Victoria, Australia

P: +61 3 9560 4488 F: +61 3 9562 0449 E: sales@advanceantislip.com

[www.advanceantislip.com](http://www.advanceantislip.com)