

# SAFEPLATES



**ADVANCE**  
ANTI-SLIP SURFACES P/L

**30** years

**Advance Anti-Slip Safeplates are a Class One, ready to install, metal backed product with a robust antislip surface. Provides firm footing on wet or oily surfaces and is designed for application in slippery or hazardous areas.**

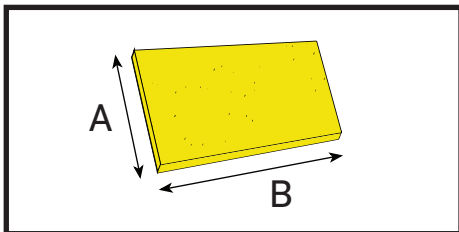
Safeplates can be produced to suit most situations where firm footing is required such as on Steel mesh/ grating or grille, checkerplate, concrete, timber, FRP, etc...

## STANDARD SIZES COMBINATIONS

Width (A)	+	Depth (B)
200 mm		100 mm
400 mm		200 mm
600 mm		400 mm
750 mm		600 mm
900 mm		
1200 mm		

*Custom sizes available, Made To Order*

## HOW TO MEASURE

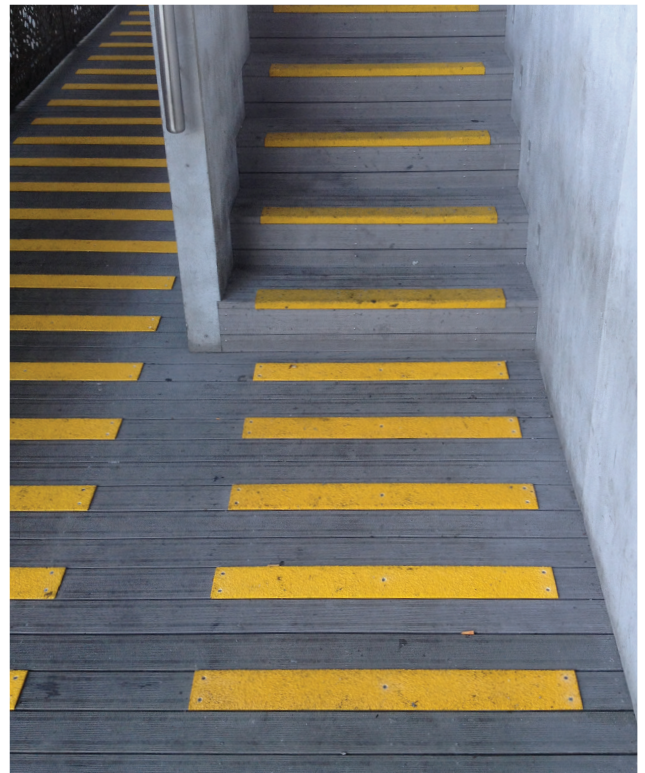


## METHOD OF INSTALLATION

**Over Grille:** Use universal clamp assembly.

**Over Steel-Aluminium-Masonry-Timber:** Use self-tapping screws, countersunk screws or rivets with a silicon sealer under the edges.

**Over Concrete:** Drive nails with a silicon sealer under the edges.



## PRODUCT FEATURES

- Provides secure footing on wet & oily surfaces.
- High impact resistance.
- Excellent chemical & UV resistance.
- Pre-Drilled for simple installation.
- Long effective life.
- Easy to clean.

### GRADES

BF	= Barefoot	80
Fine	= Fine	46
Ind	= Industrial	24
HD	= Heavy Duty	20
OS	= Offshore	16

### COLOURS

SY	= Safety Yellow	BL	= Blue
BK	= Black	RD	= Red
BR	= Brown	WH	= White
GR	= Green	Oth	= Other
GY	= Grey		

### FOUNDATIONS

GL	= Galvabond® 1.2mm
GL3	= Galvabond® 3.0mm
AL1.6	= 5052 Aluminium 1.6mm
AL3	= 5052 Aluminium 3.0mm
SS1.2	= 316 Stainless Steel 1.2mm
SS1.6	= 316 Stainless Steel 1.6mm

**ADVANCE ANTI-SLIP SURFACES Pty. Ltd.**

6A Aristoc Road, Glen Waverley 3150, Victoria, Australia

**P:** +61 3 9560 4488 **F:** +61 3 9562 0449 **E:** sales@advanceantislip.com

**www.advanceantislip.com**