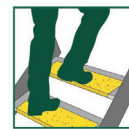


CONVEYOR CHANNEL CLEATS



ADVANCE
ANTI-SLIP SURFACES P/L

30 years

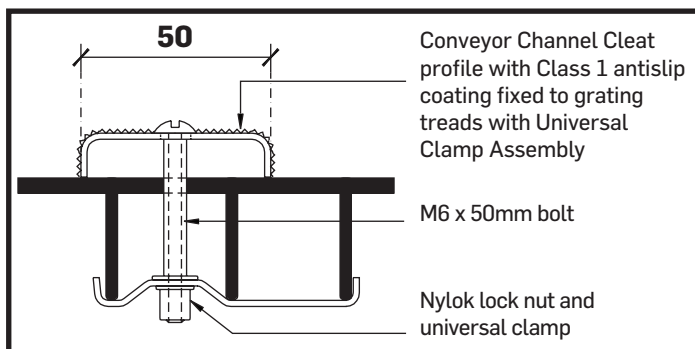
Advance Anti-Slip Surfaces manufacture a concise range of Class One, ready to install, metal backed antislip Conveyor Channel Cleats with a durable non-slip surface designed to provide firm footing on any type of conveyor ramp or walkway, even with a sharp rising incline. Conveyor Channel Cleats come in a standard profile of 10mm high by 50mm in depth and a width from 450mm to 1200mm long, that are intended to suit most pedestrian access areas.

STANDARD SIZES COMBINATIONS

WIDTH (A)	+	DEPTH (B)	+	RETURN (C)
580mm		50mm		10mm
730mm		50mm		10mm
880mm		50mm		10mm
1030mm		50mm		10mm
1180mm		50mm		10mm

Custom sizes available, Made To Order

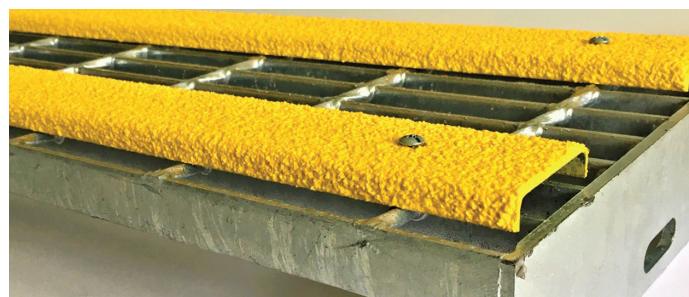
MEASUREMENTS



AS 1657 – 2013 Section 5.3.2 Slip Resistance

Slip resistance shall comply with clause 3.1.3

Where the angle of slope of the walking surface is between 10° and 20°, the surface shall have cleats fitted across the full length of the walking surface at 90° to the direction of travel.



PRODUCT FEATURES

- Provides secure footing on wet & oily surfaces
- Robust, durable, reliable
- Available in many colour options.
- Pre-Drilled for simple installation.
- Australian Standard 4586:2013 compliant.
- Backed by Advance Anti-Slip's extensive warranty.
- High impact resistance.
- Excellent chemical & UV resistance.
- Long effective life.
- Easy to clean.



INSTALLATION GUIDE

Universal Clamp Assembly at regular intervals.

Pre-drilled holes come as standard.

If additional holes are required, mark the hole positions and drill through from the underside of the foundation.

Make sure there are sufficient holes to anchor the conveyor channel cleat to the grating structure.

AS 1657 – 2013 Section 5.3.3 Cleats

Cleats shall be of metal, not less than 10mm x 10mm and evenly spaced at the following intervals;

At slope angles >10° to 15° – 450mm

At slope angles >15° to 18° – 400mm

At slope angles <18° – 350mm

GRADES

Ind = Industrial 24
HD = Heavy Duty 20
OS = Offshore 16

COLOURS

SY = Safety Yellow
BK = Black
BR = Brown
GR = Green
GY = Grey
BL = Blue
RD = Red
WH = White
Oth = Other

FOUNDATIONS

GL = Galvabond® 1.2mm
AL1.6 = 5052 Aluminium 1.6mm
SS1.2 = 316 Stainless Steel 1.2mm

ADVANCE ANTI-SLIP SURFACES Pty. Ltd.

6A Aristoc Road, Glen Waverley 3150, Victoria, Australia

P: +61 3 9560 4488 F: +61 3 9562 0449 E: sales@advanceantislip.com

www.advanceantislip.com