



ADVANCE
ANTI-SLIP SURFACES P/L

35
years

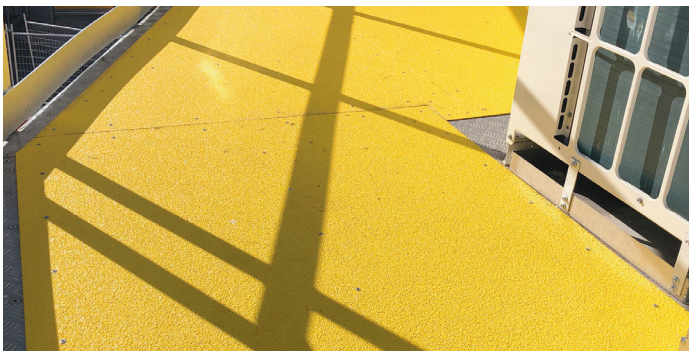
Precision Safety for Precision Engineering

Reliable Antislip Solutions for Engineering Plants

Engineering Demands Precision. So Does Safety.

Slips, trips, and falls can disrupt workflows, damage equipment, and risk worker safety. Our high quality antislip solutions are engineered for the precision and durability your engineering plant requires.

- **Heavy-Duty Durability**
Withstands wear from machinery, tools, and constant movement.
- **Unmatched Safety**
Superior traction on surfaces prone to oil, grease, and coolant spills.
- **Customisable Fit**
Tailored for walkways, workstations, ladders, stairs, and platforms.
- **Low Maintenance & Resilient**
Reliable performance with minimal upkeep.
- **Safety Compliance**
Meets Australian and International safety standards to protect your workforce and business.



**Keep Your Operations
Moving Safely**

Call Us: +61 3 9560 4488

www.advanceantislip.com.au

Why Our Antislip Solutions are Perfect for Engineering Plants

BUILT FOR PRECISION AND DURABILITY

Our Class 1 metal-backed antislip products are engineered to withstand the demands of high-precision environments, ensuring consistent safety and performance.

Key Benefits:

- **Resistance to Industrial Fluids**
Effective against oil, grease, coolants, and lubricants common in engineering plants.
- **Custom Solutions for Key Areas**
Designed for critical zones, including:
- **Reliable and Resilient**
Durable materials ensure long-lasting protection with minimal downtime.

Compliance with Safety Standards

Stay compliant with WHS workplace safety standards and regulations, and reduce the risk of costly incidents.



ADVANCE ANTI-SLIP SURFACES Pty. Ltd.

6A Aristoc Road, Glen Waverley 3150, Victoria, Australia

P: +61 3 9560 4488 F: +61 3 9562 0449 E: sales@advanceantislip.com

www.advanceantislip.com

Take Action Now!
Prevent Accidents,
Protect Productivity.